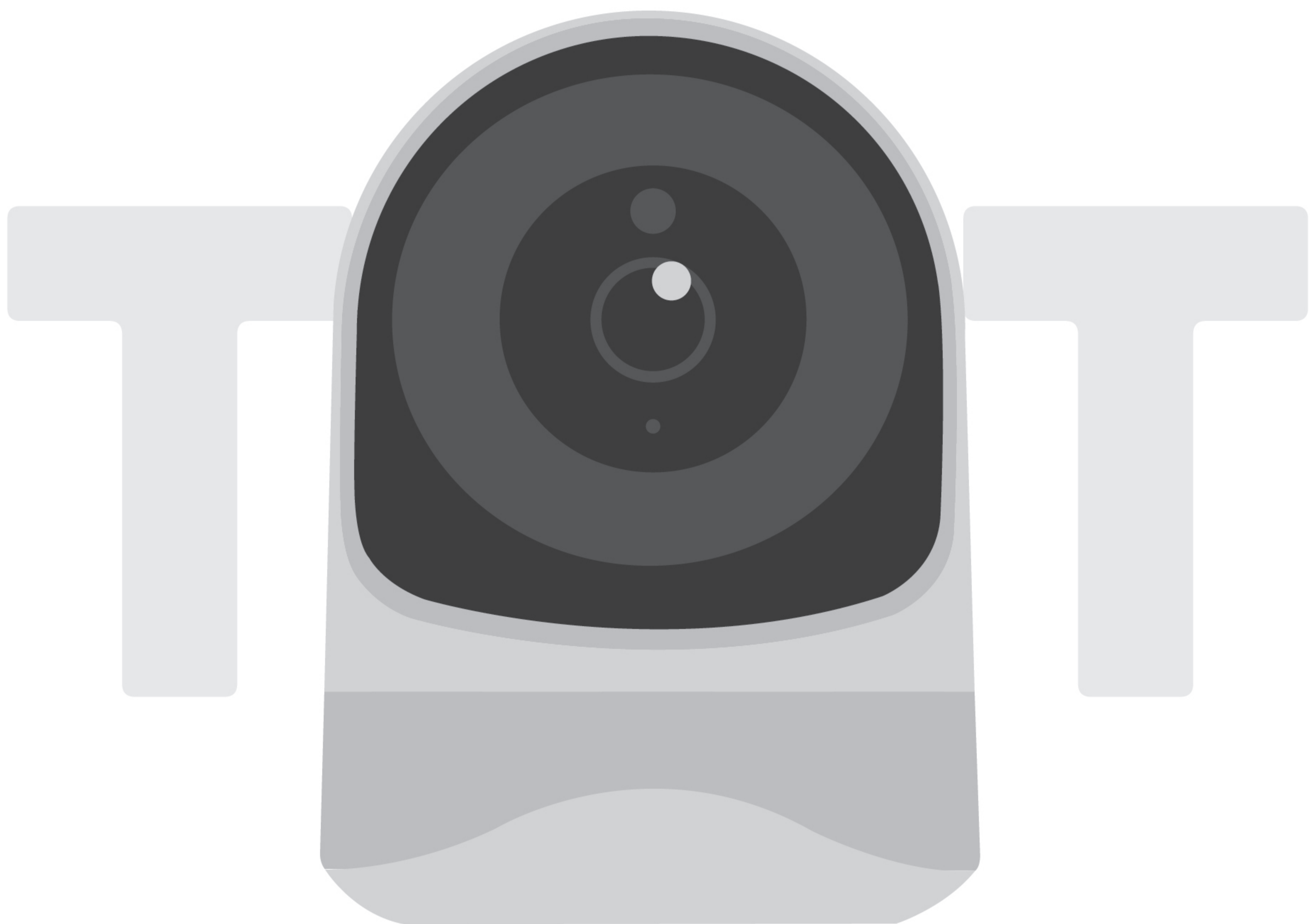


ChowCAM

Dome2



User Manual

Wireless Outdoor IP Camera



Index

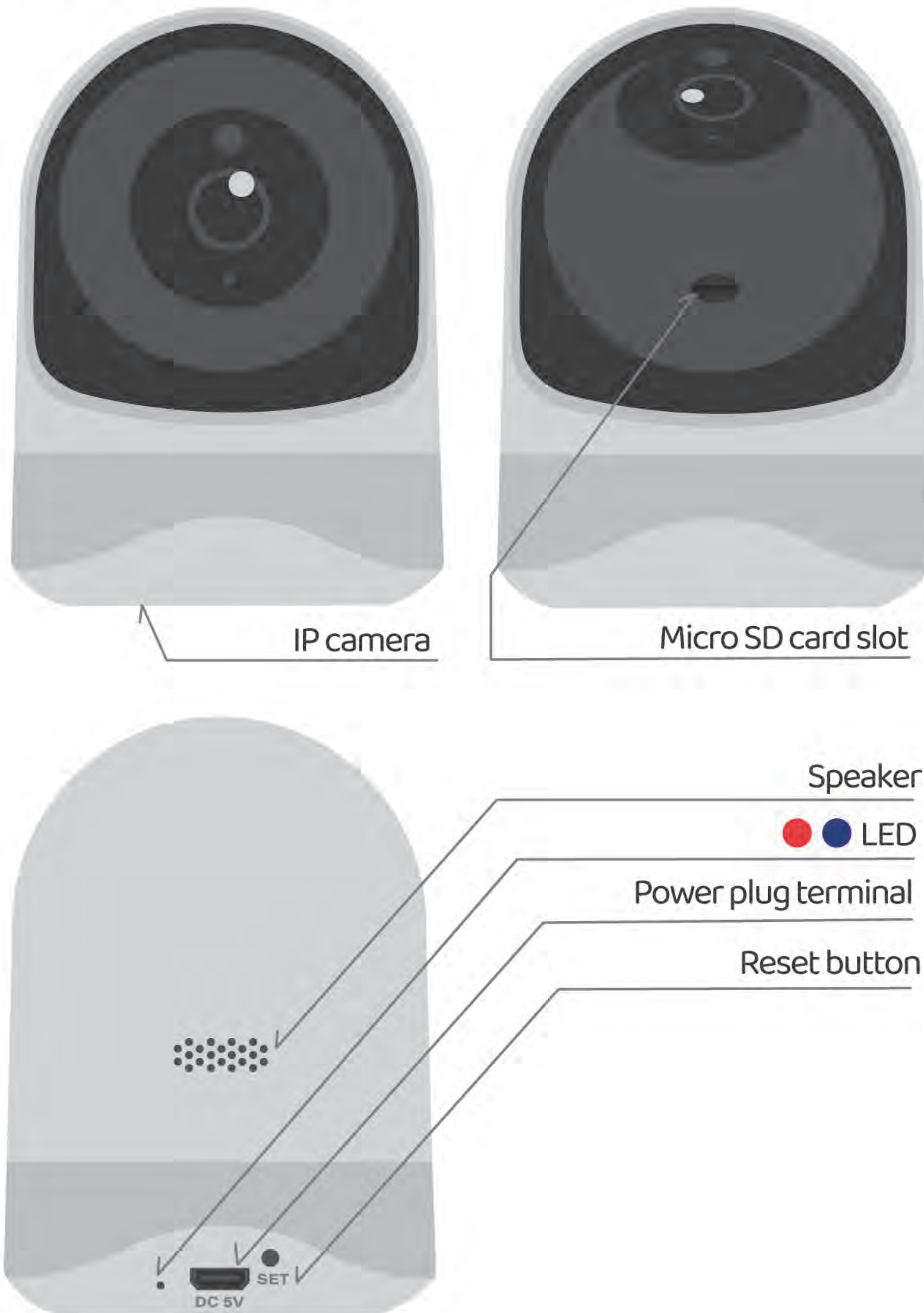
Introduction of DOME 2	P2
Product overview	P2
LED light status	P2
Kit contents	P3
Specifications	P3
General installation	P4
Apply for a new Chow! account	P5
Connecting ChowCAM to Chow! App	P6
Operation page	P8
Owner shares the ChowCAM to other users	P9
Push notification	P11
LED LIGHT STATUS	P12
FAQ	P12



Introduction of the ChowCAM-Dome2

Dome2 is a device which can be integrated with Chow! App and Chow's devices. Dome2 will provide a live view of the site which allows you to check the environment before operation. With a micro SD card, Dome2 can record each operation and movement for future review.

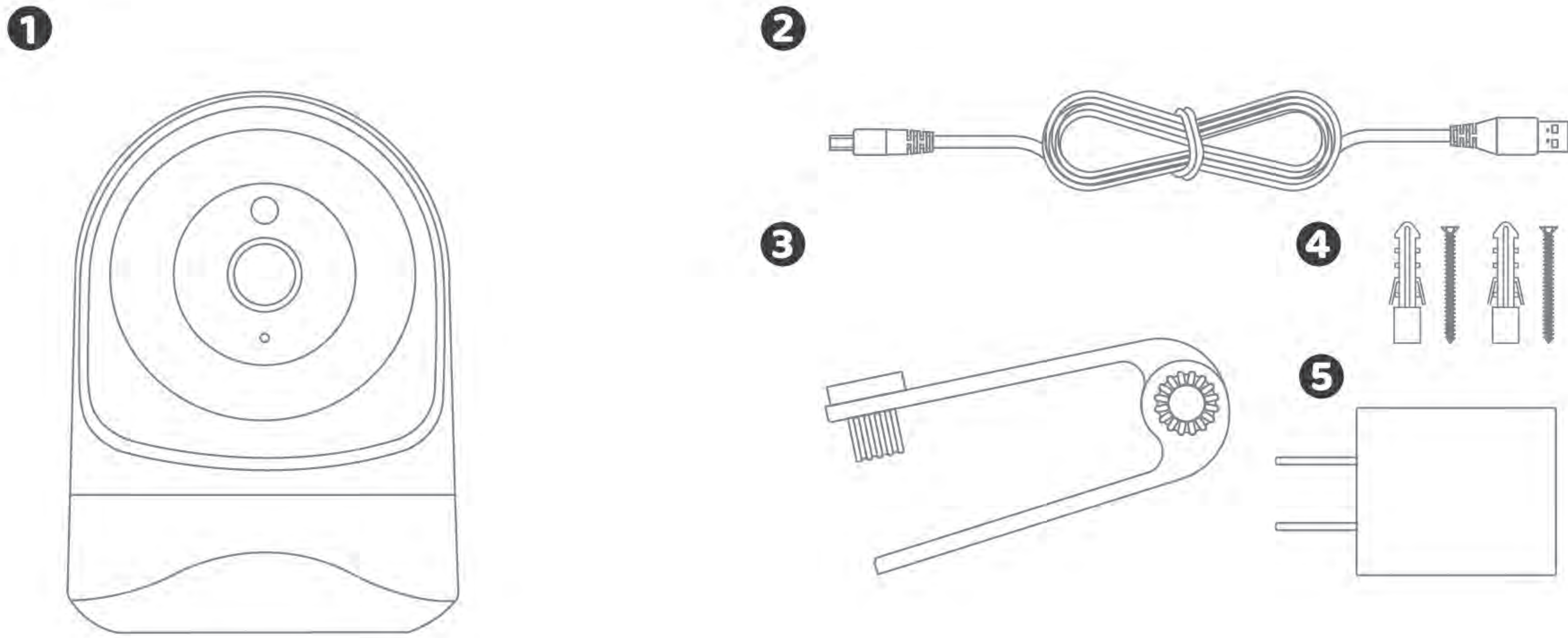
Product overview



LED light status

LIGHT STATUS	CAMERA STATUS
Red light on	Camera is powered on
Red and blue light alternately flashing	Waiting to connect now
Blue light flashing	Camera is connecting Wi-Fi
Blue light solid	Succeeded to connect Wi-Fi
Red light quickly flashing	1. Reset camera to factory setting 2. Camera is upgrading firmware

Kit contents



1 DOME 2 2 Power wire 3 Bracket 4 Installation kit 5 Adaptor

Specifications

Video resolution	Full HD 1080P
Compression	H.264
Frame rate	1920x1080@15fps
Field of view	110 Degree
Day/night mode	ICR with IR LED
Connectivity	802.11b/g/n@2.4GH
Etherne	10/100Mbps
Alarm	Motion Detection
Storage	Micro SD Card 128GB (SD Card Not Include)
Record mode	Event
Operating temperature	-10°C - 40°C
Power	Power Adapter DC 12V/1A

General installation



- 1 Connect the Dome2 with the power wire.



- 2 Connect the power wire with the adaptor.



- 2 Connect the adaptor to the socket.

Apply for a new Chow! account

1. Please scan the QR code and download the Chow! App
2. Press sign up icon and press the agree icon to continue
3. Please type the following information for registration:



- a. Email (enter twice for verification)
- b. Password (enter twice for verification)
- c. The password should have at least 1 English character and at least 8 characters in total

4. The system will send a link to your email when the registration succeeded.
5. Please go to your email ,and click the link to activate your Chow! account.
6. Please log in to your Chow! account.

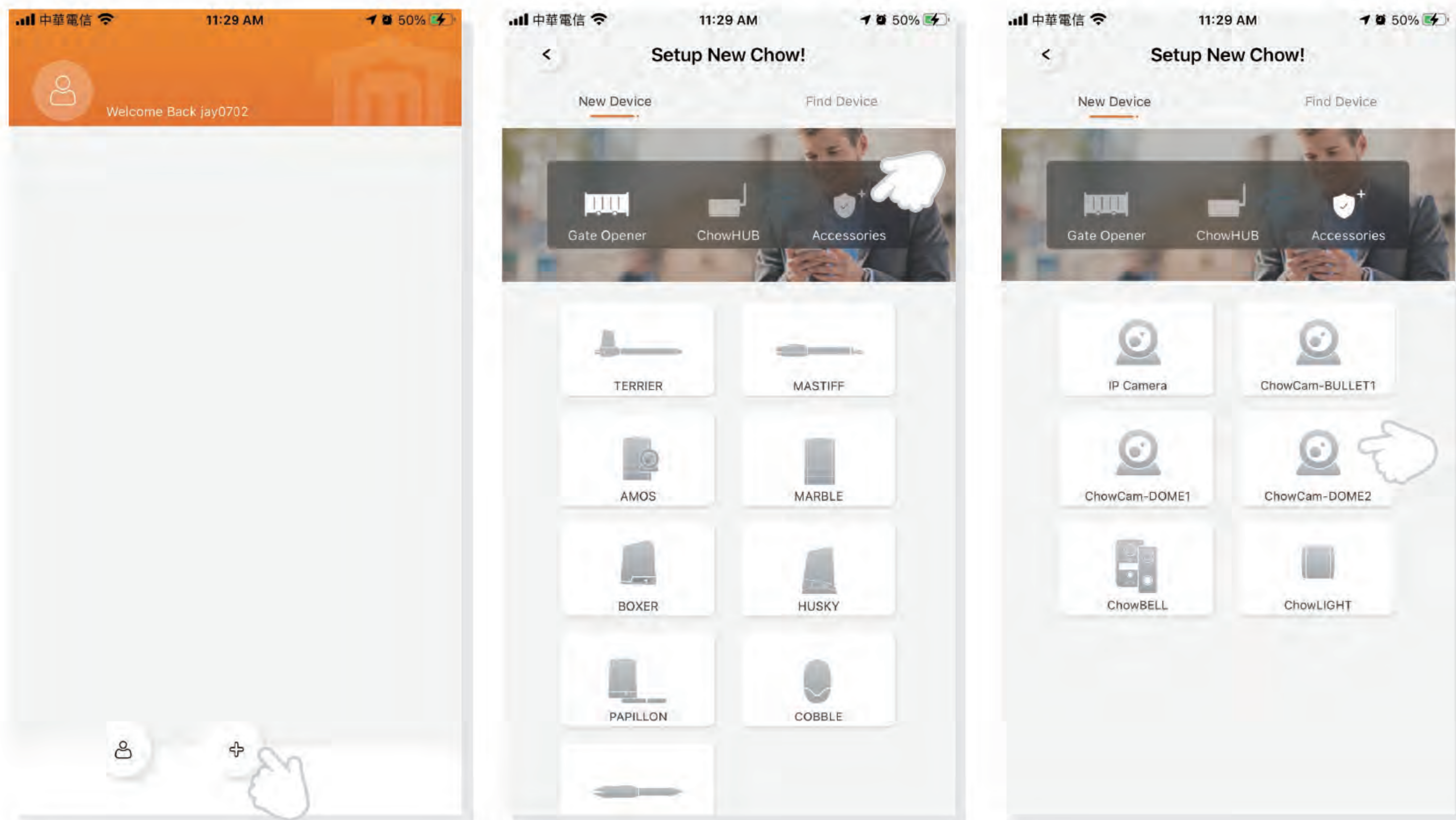


Connect DOME 2 to Chow! App

Step 1 Add a new ChowCam-DOME 2

Tap the (+) icon to add a new device

New device -> Accessories -> ChowCam-DOME 2



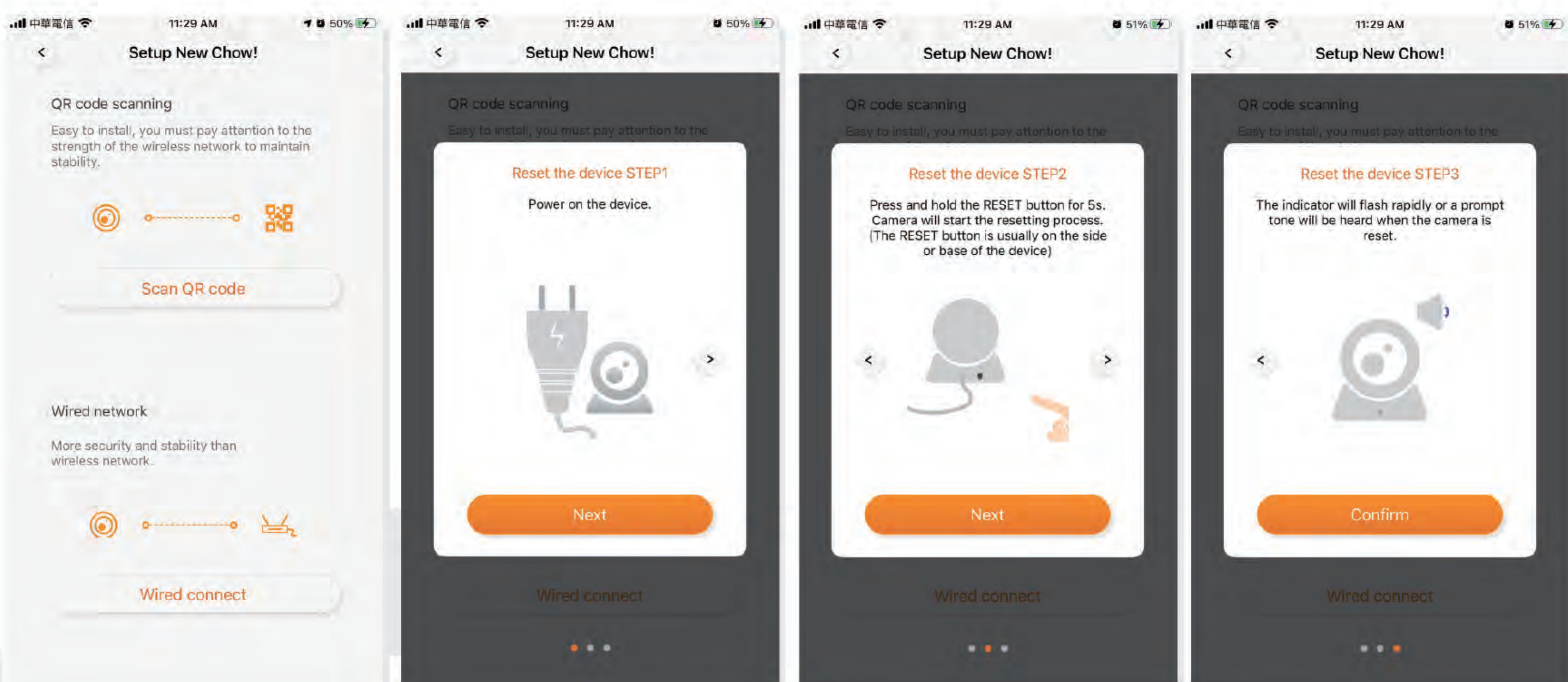
Tap the (Scan QR code) icon

Follow the indications as below:

Step 1 – Power the device

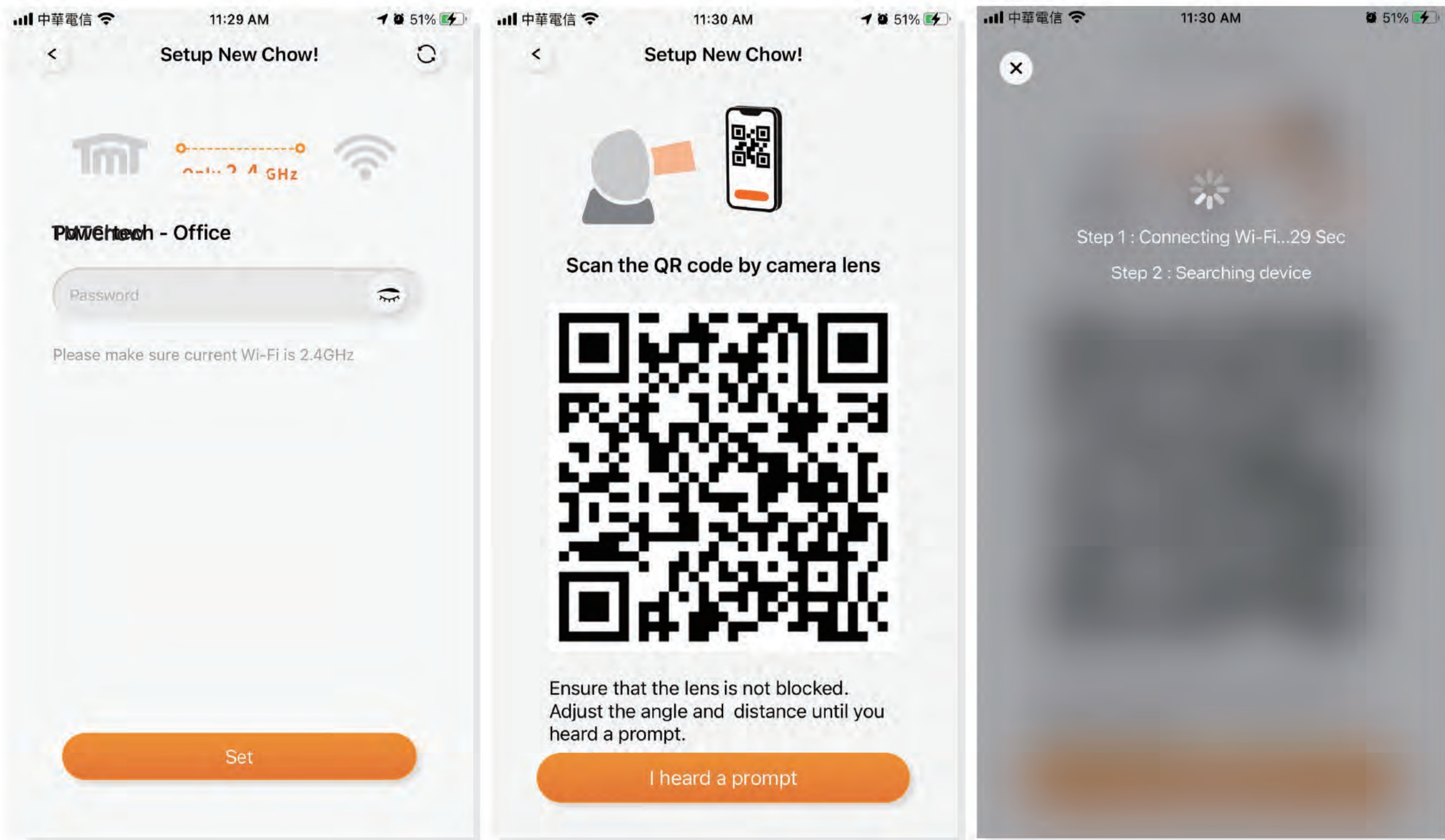
Step 2 – Reset the device

Step 3 – ChowCam-DOME 2 sound once when it has been reset



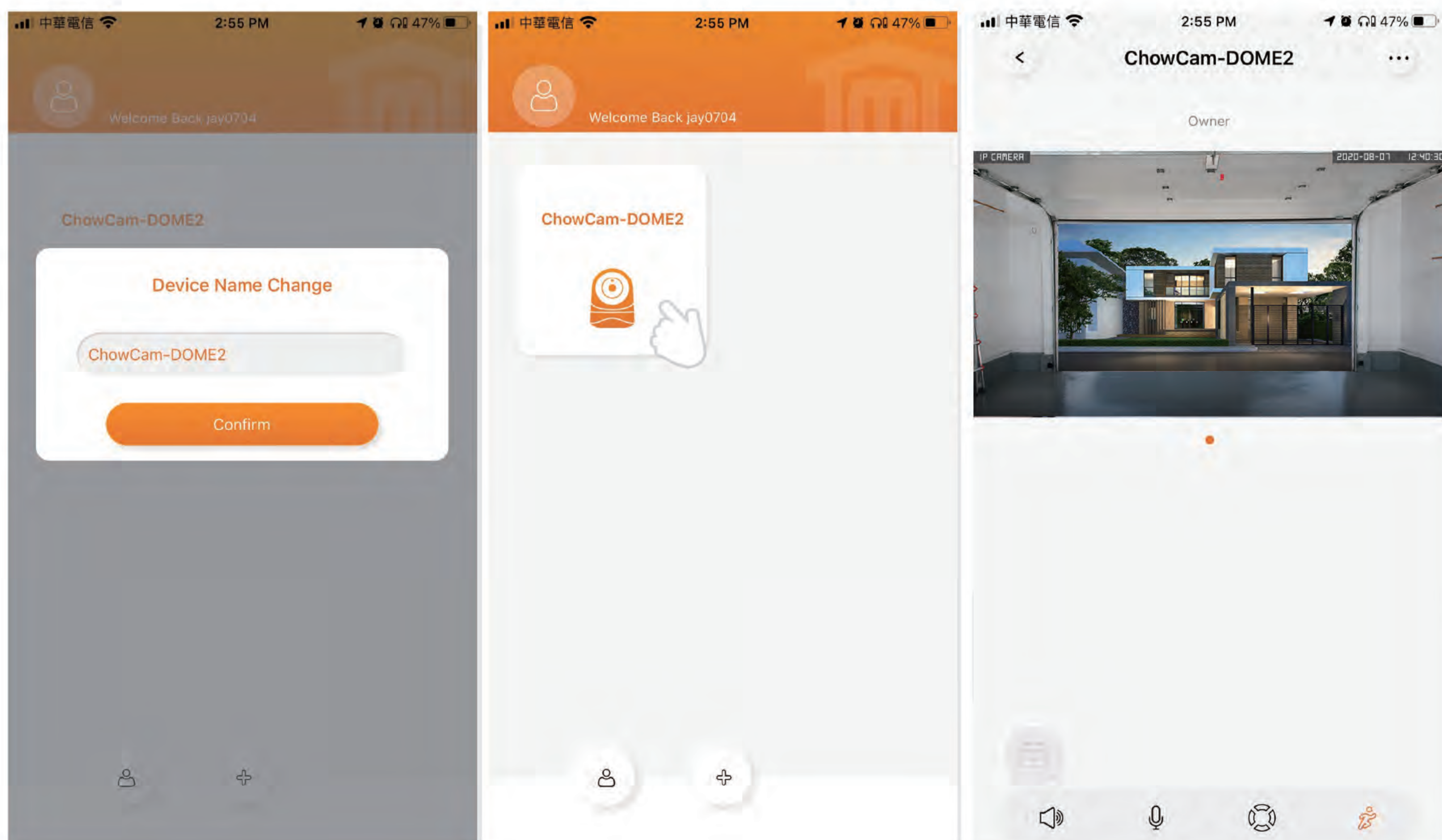
Step 2 Connect ChowCam-DOME 2

Entering the correct password for the Wi-Fi network and press set
 Scan the QR code in front of the camera until it sounds once
 The system starts connecting to Wi-Fi network.

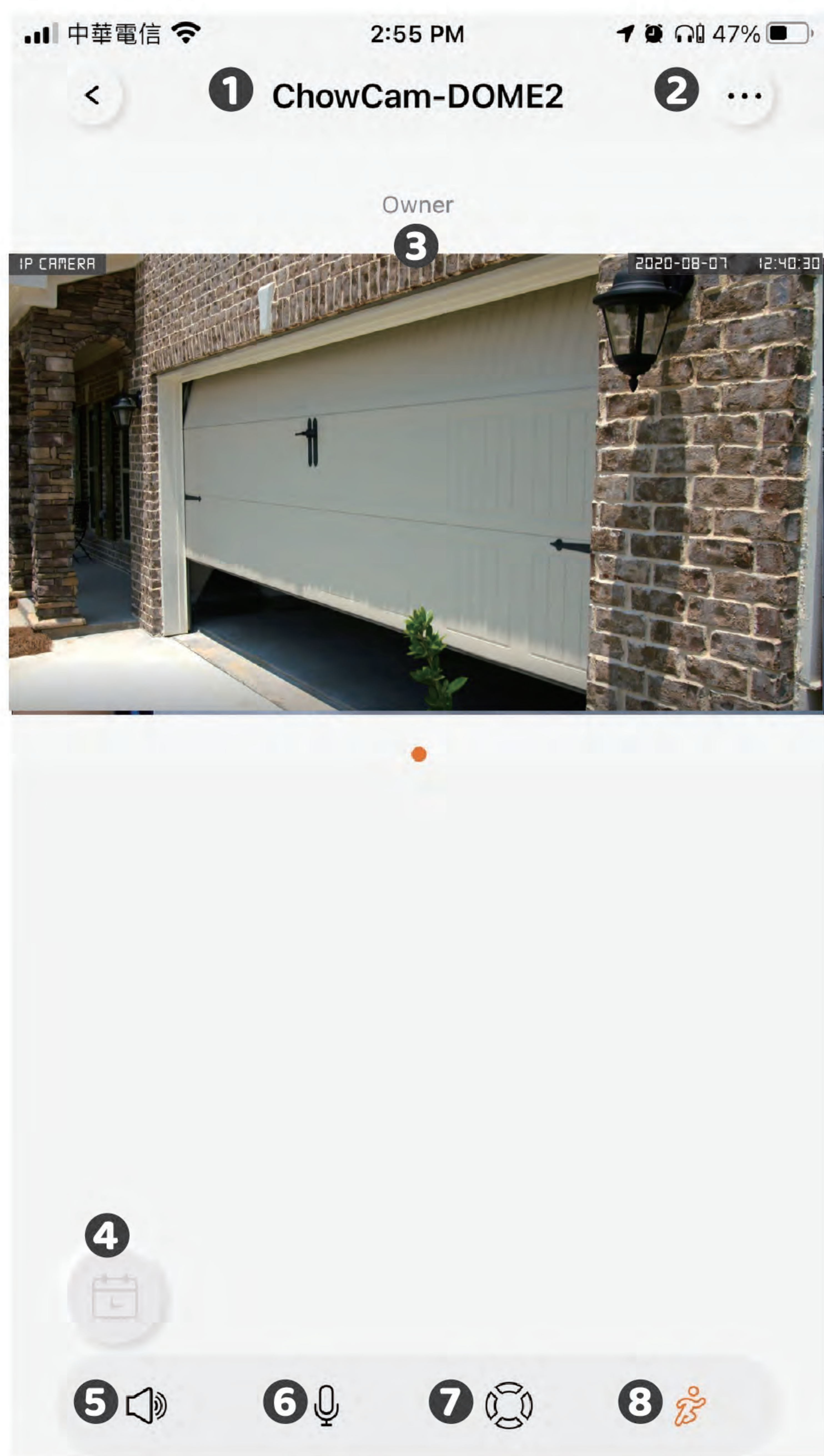


Step 3 Setting

Set the name of your camera
 Tap the icon of the Camera to enter the operation page.



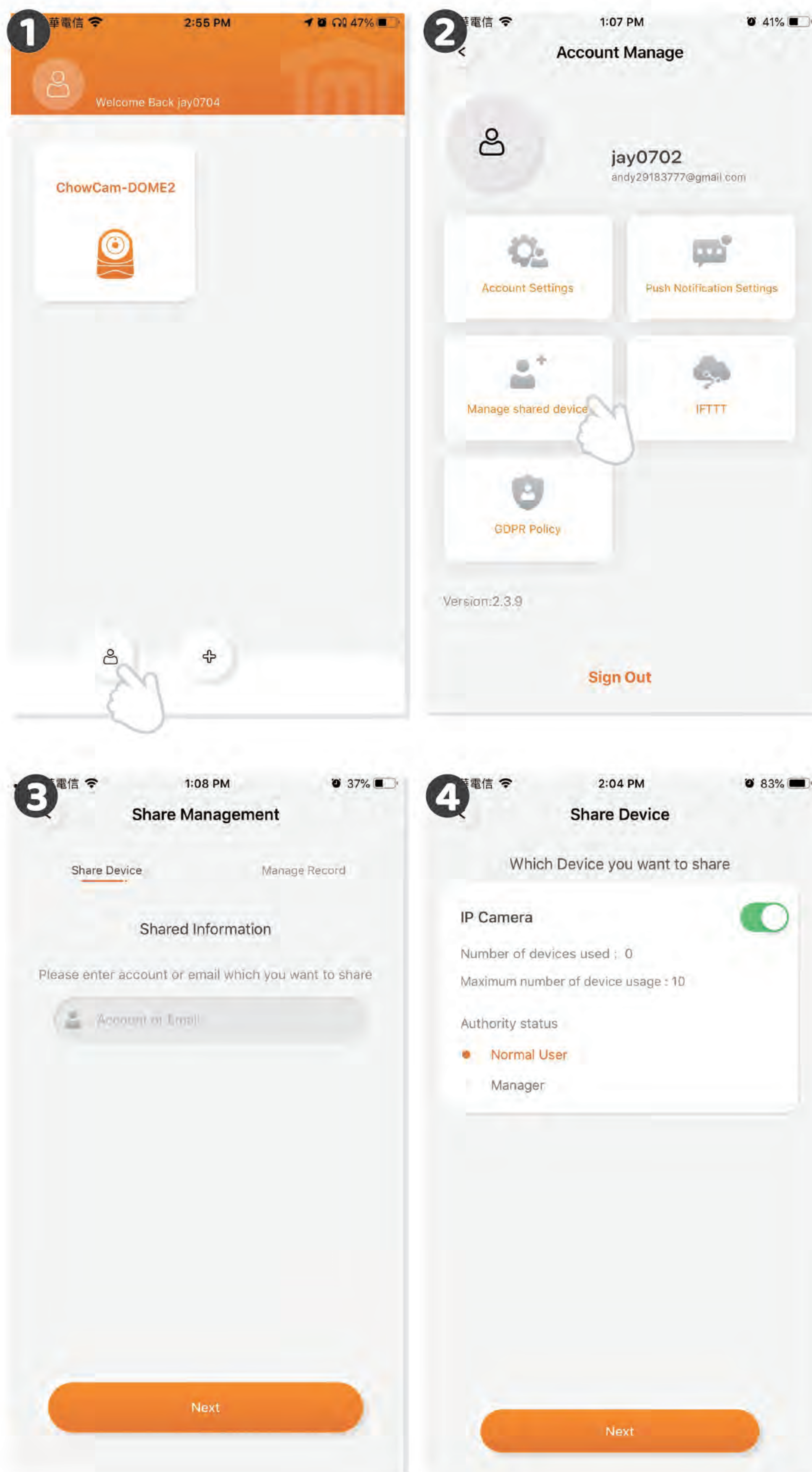
Operation page



- 1 Name of the device
- 2 Setting
- 3 Owner/Manager/User
- 4 Recorded Video (only with Micro SD card)
- 5 Speaker
- 6 Mic
- 7 Rotation
- 8 Motion detection

Owner shares the ChowCAM to other users

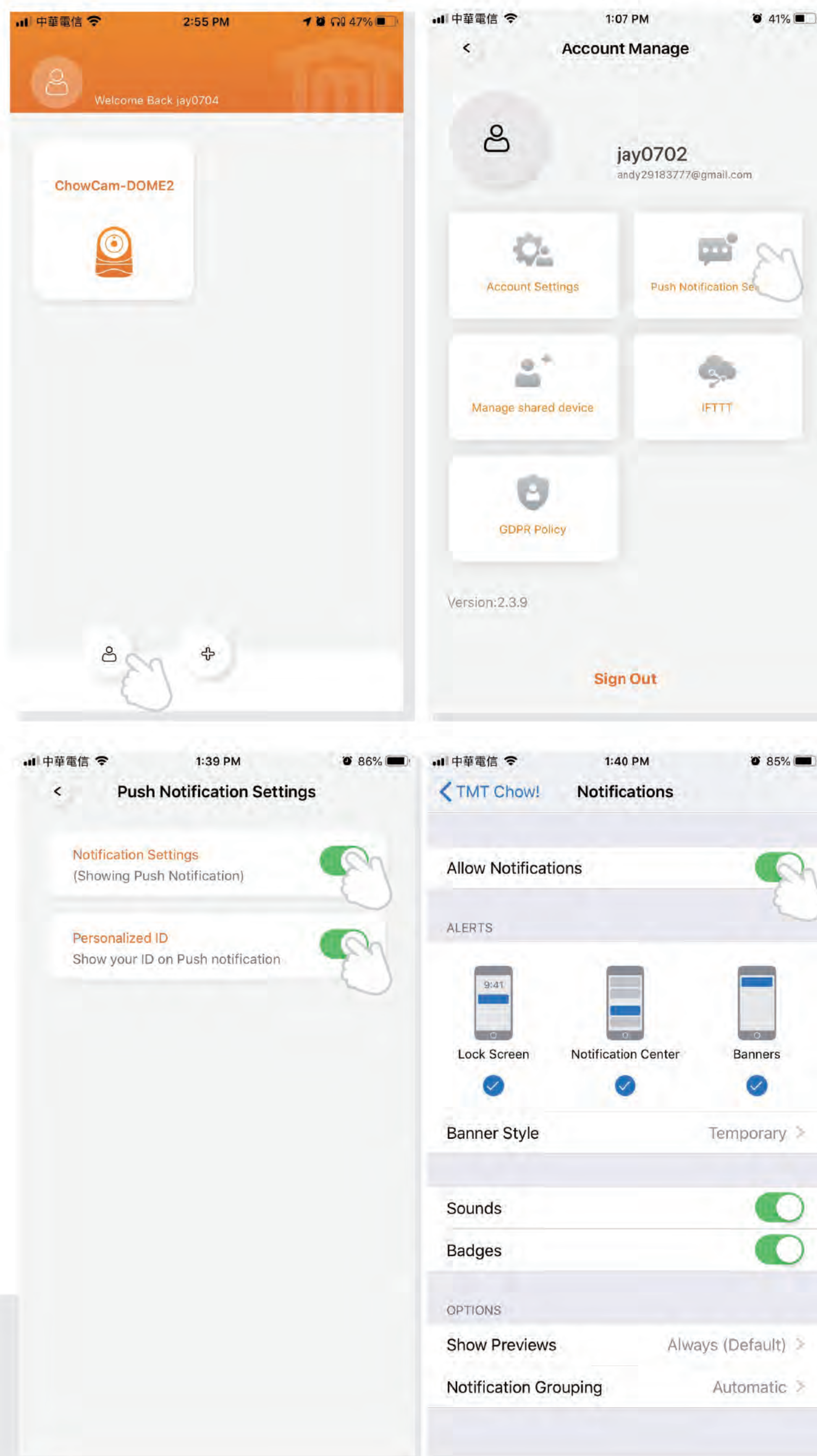
- 1 Press the icon on the corner to enter the account management page.
 - 2 Tap the manage shared device.
 - 3 Enter the account which you are going to share.
 - 4 Choose the device you are going to share and tap next.
- a. The Owner can decide the permission of device sharing.
A manager can share and operate this device, but a normal user can only operate it.
- b. One ChowCAM can only be shared to 10 users.



Push notification

- 1 Press the icon on the corner to enter the account management page.
- 2 Tap the push notification setting.
- 3 Turn **ON** the switches of the notification.

*****Please go to the settings page of your smartphone, find TMT Chow! and allow the notifications*****



FAQ

Question 1

How to reset DOME 2 to default setting?

Answer 1

1. Delete DOME 2 on the Chow! APP by sliding the DOME 2 icon and press the delete icon.
2. Press the reset button for 10 seconds until DOME 2.



Question 2

Can not see the view after DOME 2 has already completed the Wi-Fi connection.

Answer 2

1. Make sure your Wi-Fi is functional.
2. Un-plug and reconnect the power plug of DOME 2.
3. Check if you enter the PIN code at the device page.

nt

TMT AUTOMATION INC

TMT AUTOMATION INC

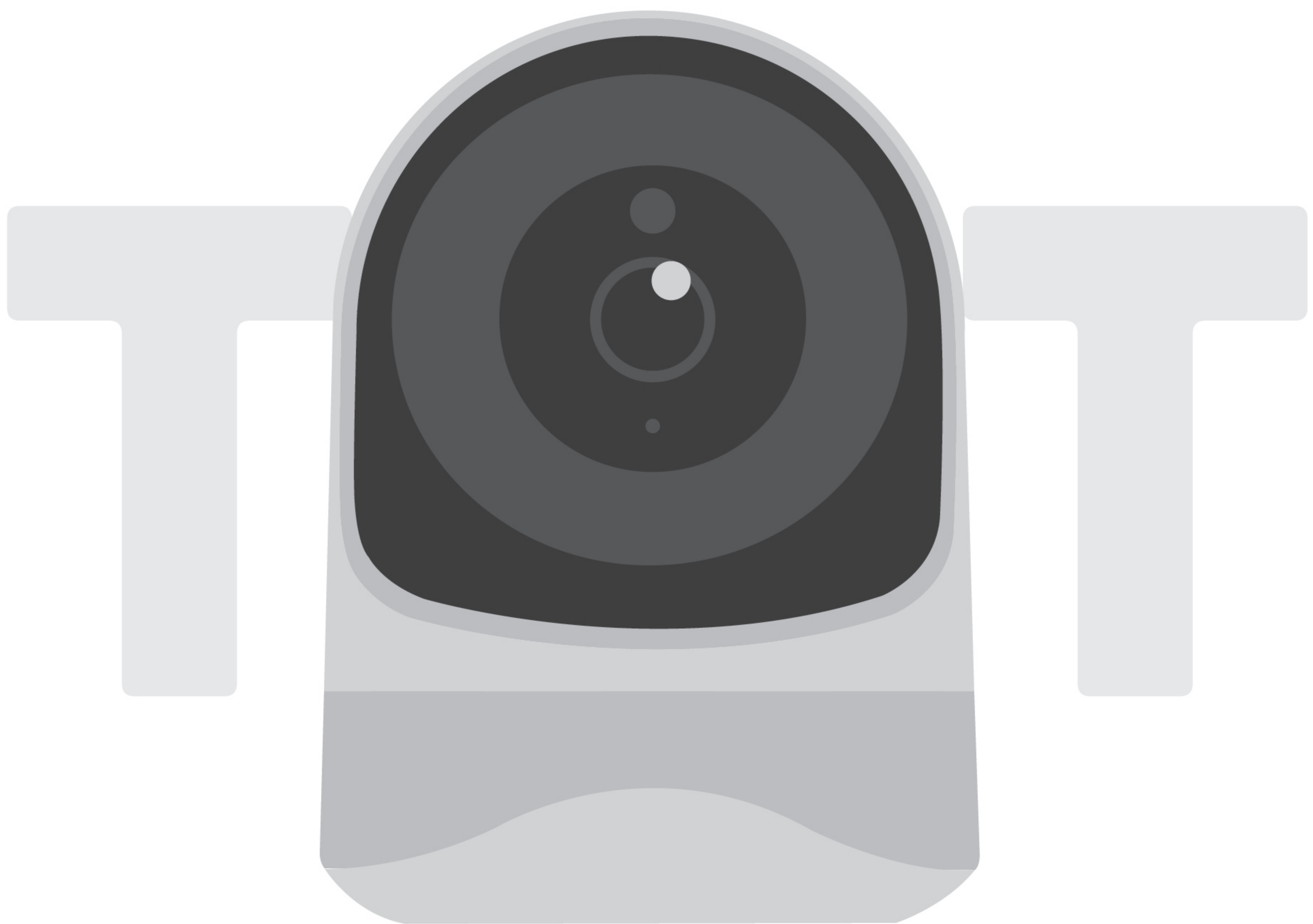
Tm

nt

TMT AUTOMATION INC

ChowCAM

Dome2



無線WiFi攝影機 安裝使用手冊



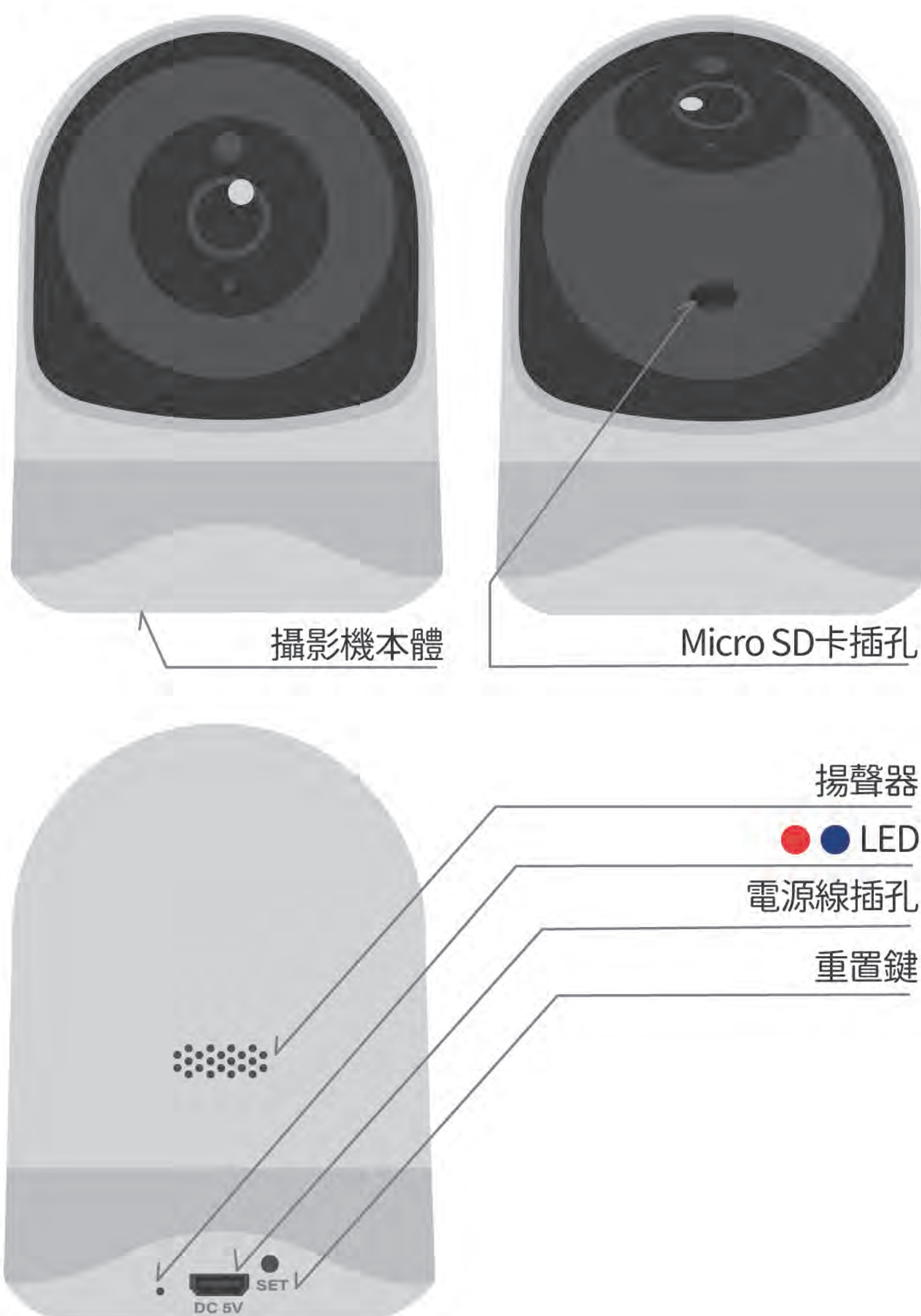
Index

IDome2介紹	P2
產品外觀	P2
LED燈號	P2
盒包內容	P3
規格	P3
硬體安裝	P4
申請帳號	P5
連線到Chow! App	P6
操作介面	P8
設備分享	P9
推播設定	P11
FAQ	P12

Dome2介紹

Dome2是一台無線WiFi攝影機並且能透過Chow! App與其他智能巧家居設備串聯
 Dome2提供了現場環境的即時畫面讓你在操作前可以確認人員安全
 影像回放的功能讓您紀錄每一次的操作，此功能需搭配Micro SD卡使用

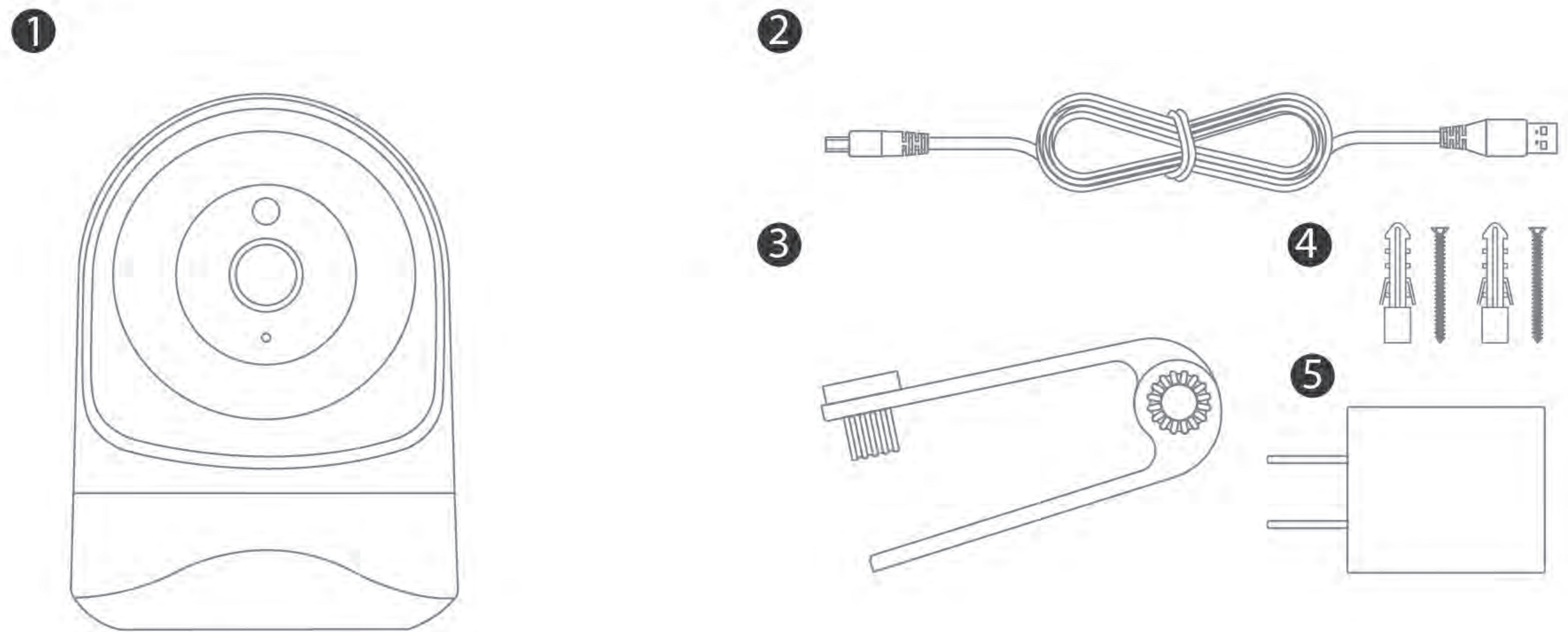
產品外觀



LED燈號

燈光狀態	相機狀態
紅燈亮	攝影機已接電
紅燈藍燈交替亮	等待連接無線網路
藍燈閃爍	攝影機正在連接無線網路
藍燈恆亮	攝影機已連接無線網路
紅燈快閃	1. 恢復出場狀態 2. 攝影機正在更新軟體

產品套件



- ① 攝影機本體 ② 電源線 ③ 固定夾具 ④ 安裝零件包 ⑤ 充電器

產品規格

解析度	Full HD 1080P
視訊編碼	H.264
幀率	1920x1080@15fps
可視角度/旋轉角度	110度 / 350度
日夜間模式	支援日夜間模式切換
無線網路	802.11b/g/n@2.4GH
有線網路	10/100Mbps
警報	Motion Detection
Micro SD記憶卡	Micro SD Card 最大支援至128G (產品不包含Micro SD卡)
錄影模式	事件觸發
工作溫度	-10°C - 40°C

硬體安裝



❶ 請將電源線接在插孔



❷ 將電源線連接於充電器



❷ 將充電器插在插座上

申請Chow帳號

1. 請掃描產品包裝的QR碼並下載Chow! APP
2. 點選註冊並同意相關資訊說明
3. 請按照順序輸入註冊資訊
 - a. 帳號
 - b. 郵件
 - c. 郵件 (請輸入第2次確保正確性)
 - d. 密碼 (至少含8位數並包含英數字元)
 - e. 密碼 (請輸入第2次確保正確性)
4. 完成註冊，系統會自動發送驗證信至您的註冊信箱
5. 請到信箱收取驗證信，並點擊信內連結以完成帳號註冊
6. 開啟Chow! APP並登入您的帳戶

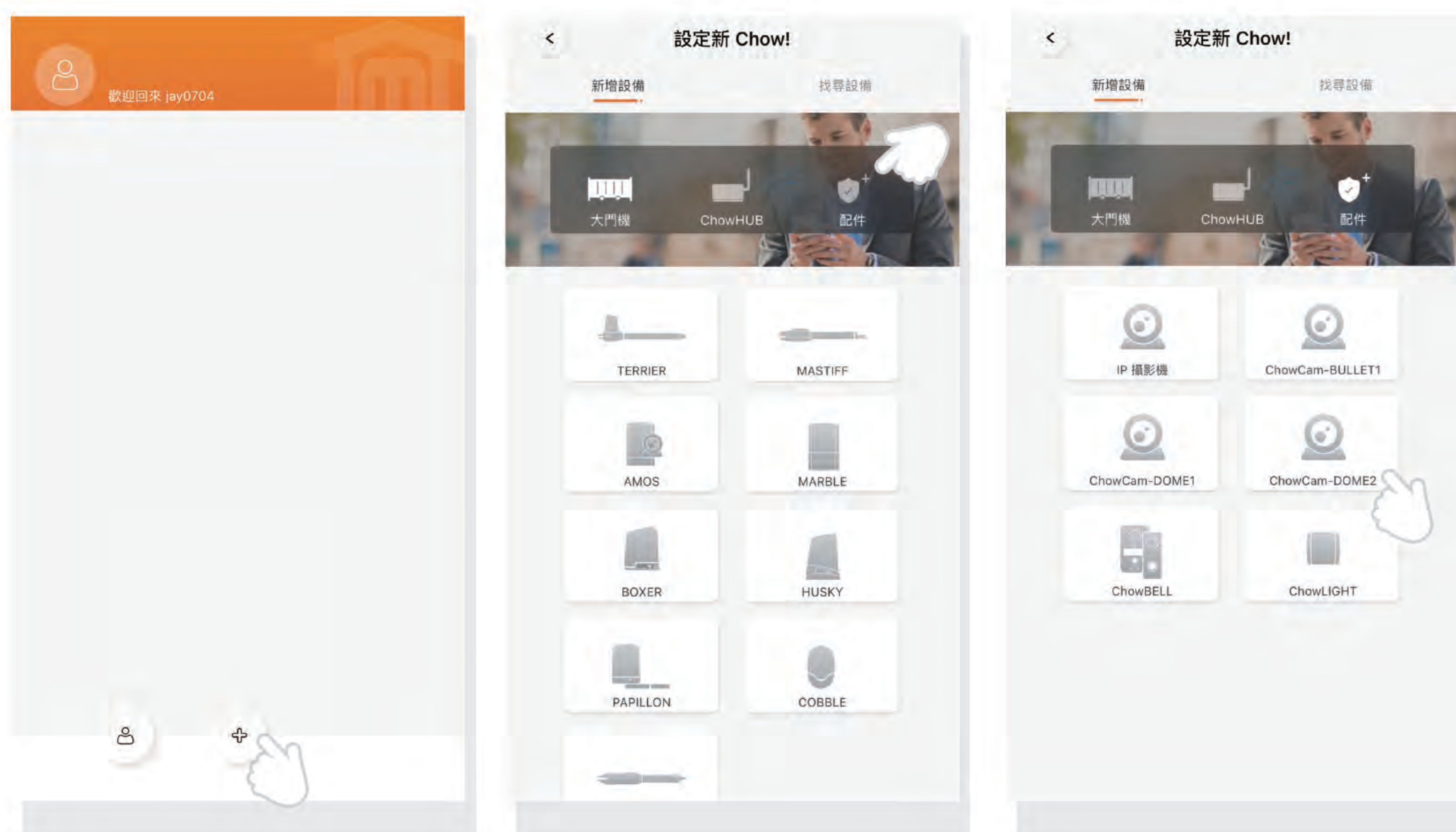


連線到 Chow! App

連線到Chow! App

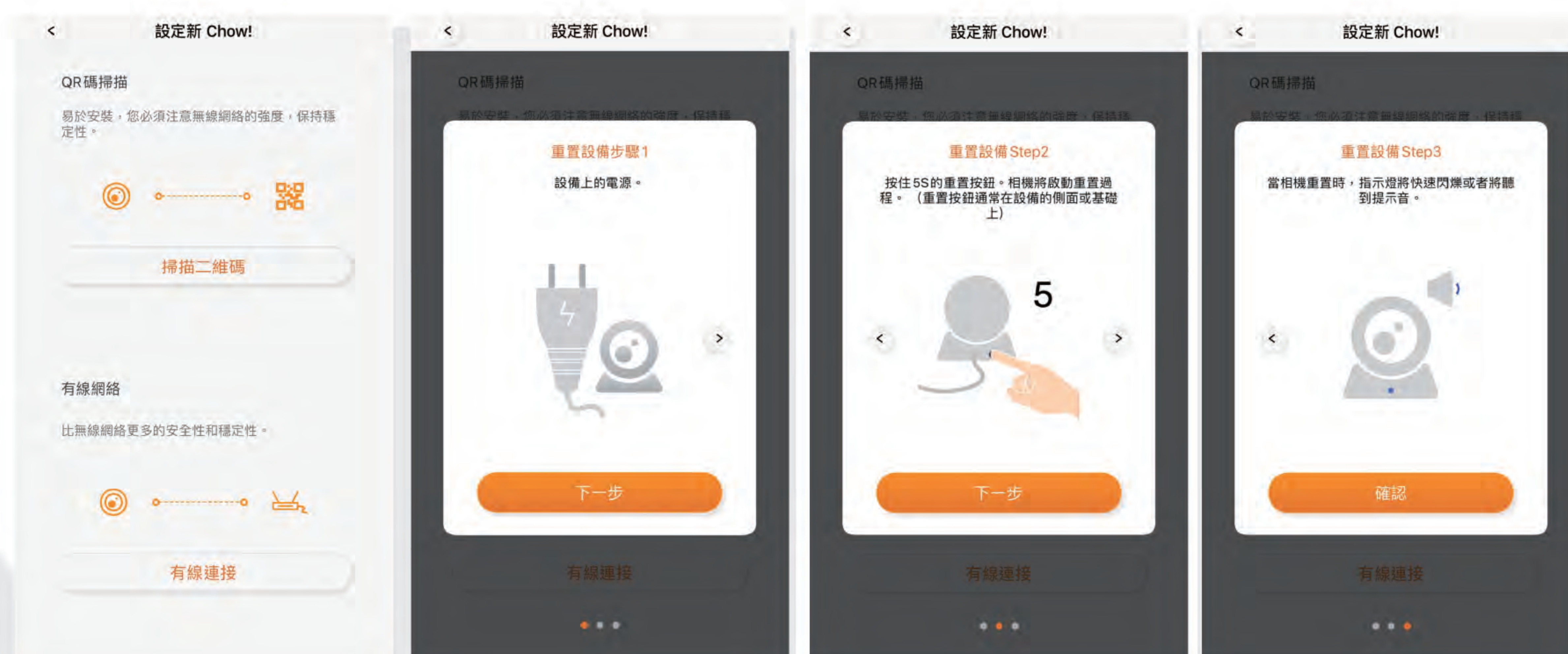
點擊(+)以新增設備

新增設備 -> 配件 -> Dome2



點擊掃描二維碼，請依據以下的指示完成連線：

1. 接上設備的電源
2. 長按重置鍵5秒
3. 當攝影機重置時，會有提示音



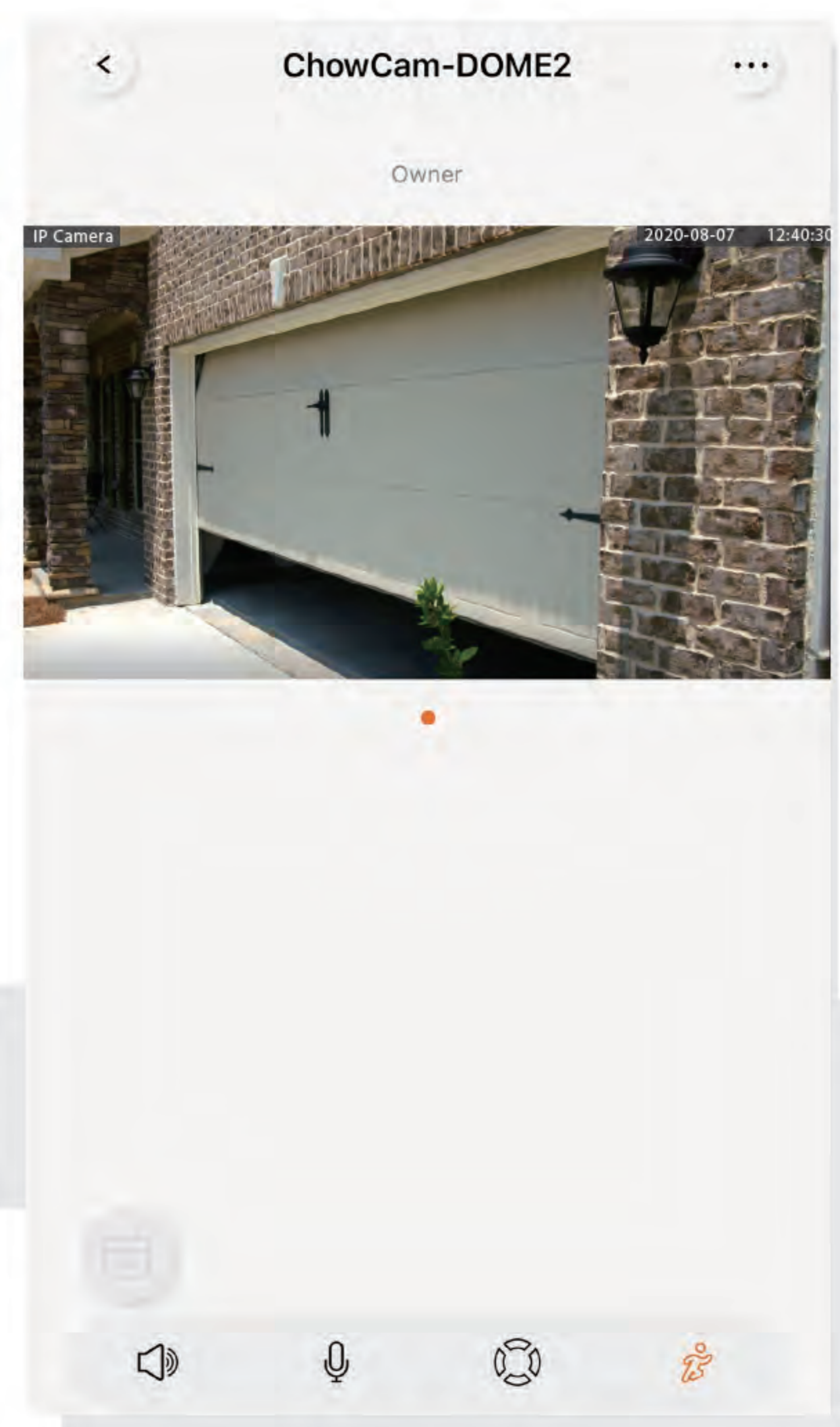
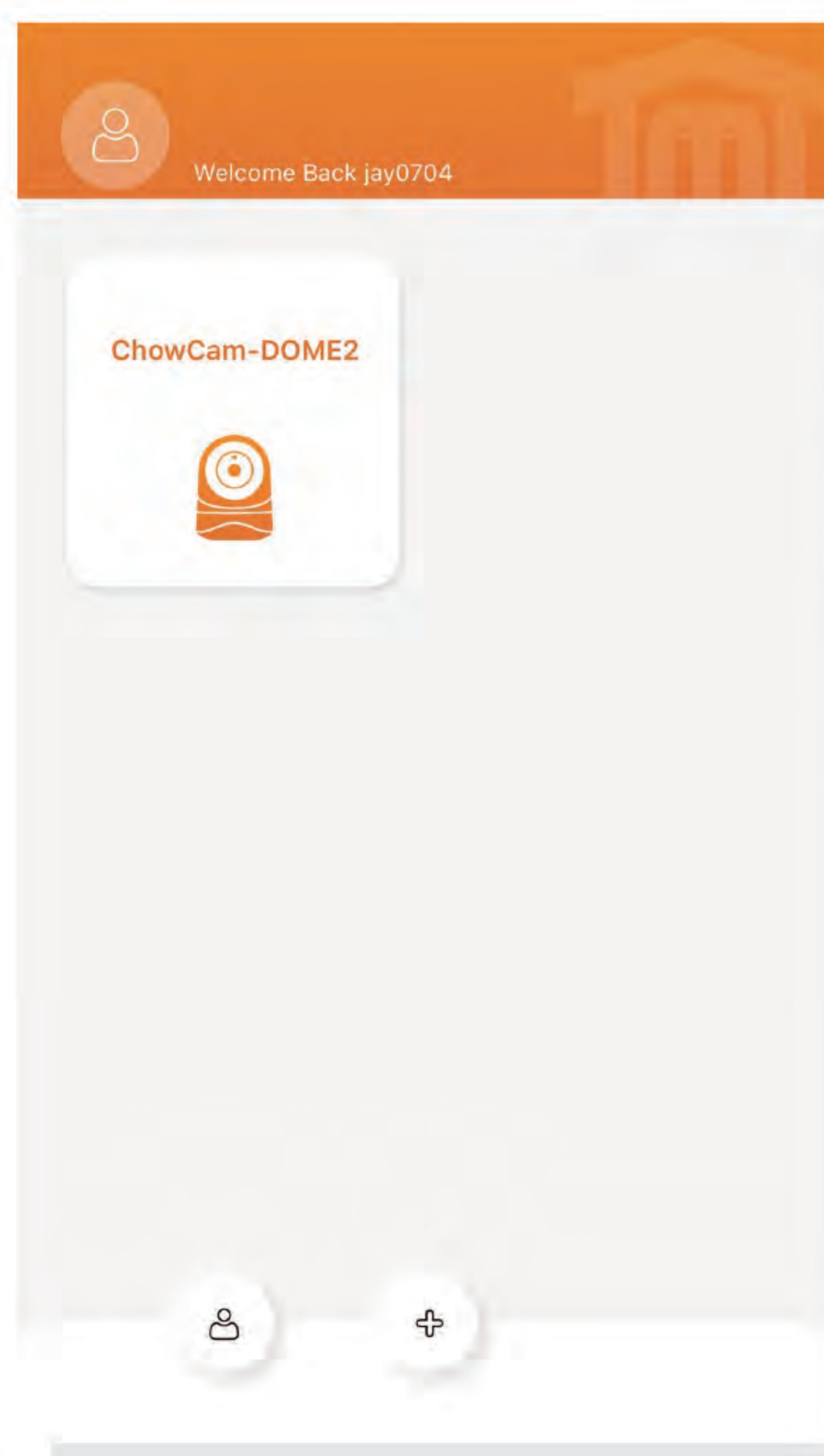
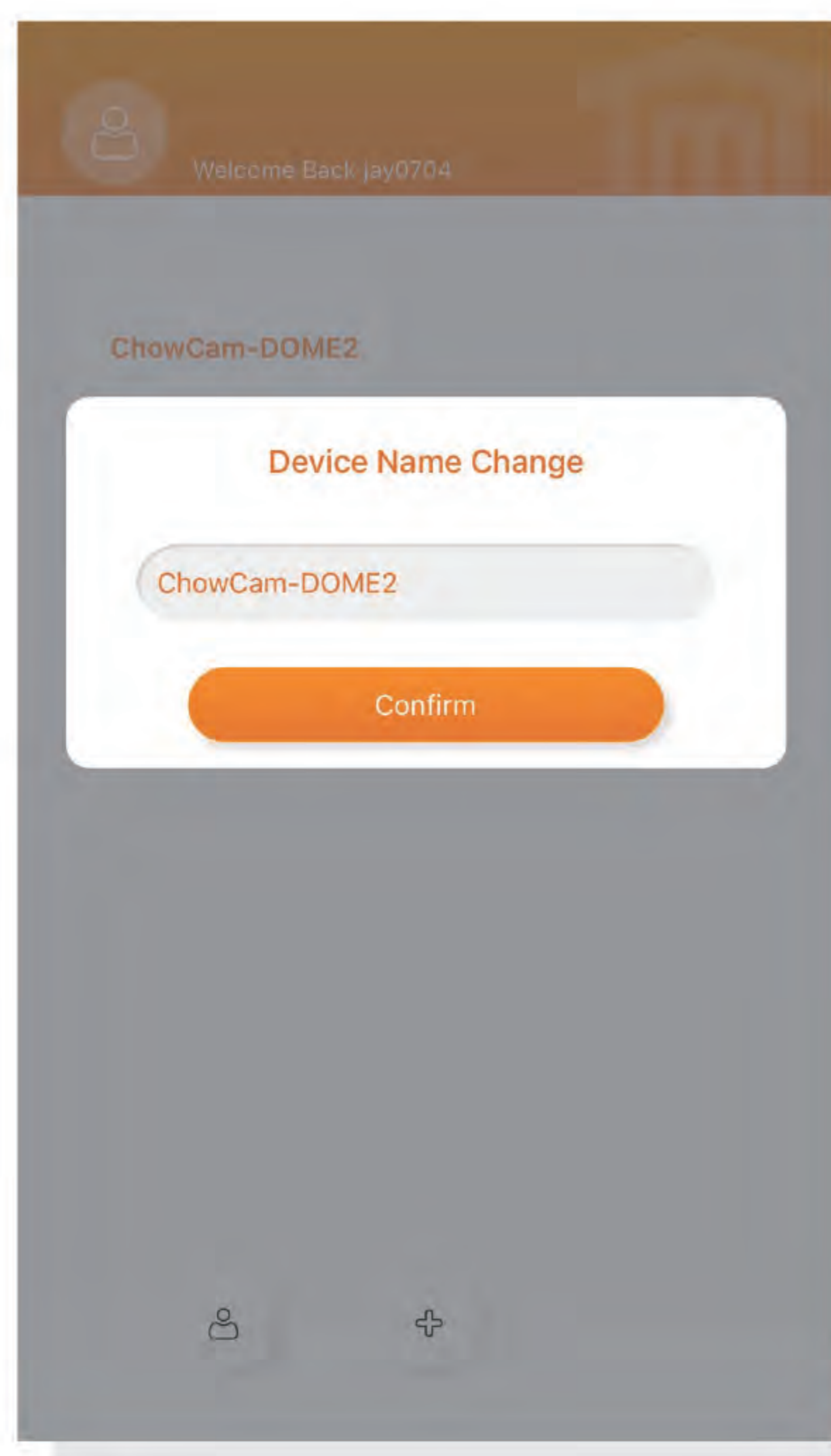
連線到 Chow! App

輸入正確的WiFi密碼，並點擊設定
通過相機鏡頭掃描QR碼
聽到提示音後點擊“我聽到了一個提示”
系統開始連線

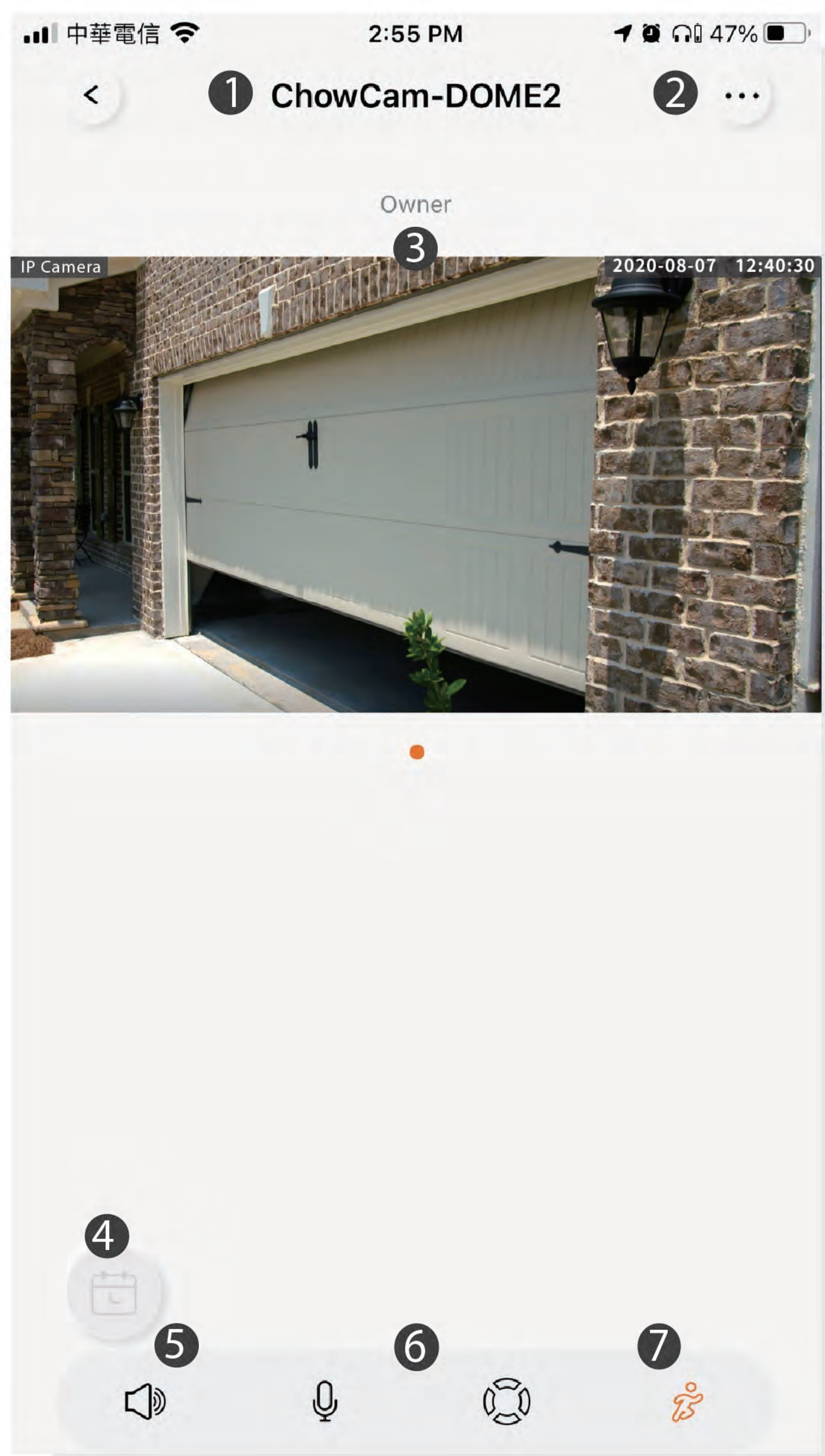


確認攝影機名稱

點擊攝影機圖示進入操作頁面



操作介面



- 1 設備名稱
- 2 設定頁面
- 3 擁有者/管理者/一般使用者
- 4 紀錄影片(需要另裝Micro SD卡)
- 5 聲音開關
- 6 對話開關
- 7 動態偵測

設備分享

- 1 點選帳戶圖示進入帳戶管理頁面。
- 2 點選管理分享設備圖示。
- 3 輸入被分享使用者的帳號。
- 4 從設備清單中選擇欲分享的設備，並選擇被分享者的權限等級(擁有者/使用者)。



推播設定

- 1 點擊左下角圖示
- 2 進入管理推播設定頁面
- 3 將推播設定以及顯示個人化用戶名稱打開
- 4 請進入手機設定頁面將Chow! App的推播功能打開



FAQ

問題 1

還原出廠設定

回答 1

1. 長按Chow! App主畫面中的設備圖示3秒並刪除設備
2. 長按Dome2重置鍵直到設備發出提示音

攝影機本體



問題 2

已完成連線的攝影機無法顯示畫面

回答 2

1. 請確認所連線之WiFi功能正常
2. 請將攝影機重新斷電上電
3. 請確認設備是否需要重新輸入六位數PIN碼

nt

TMT AUTOMATION INC

TMT AUTOMATION INC

Tm

nt

TMT AUTOMATION INC